

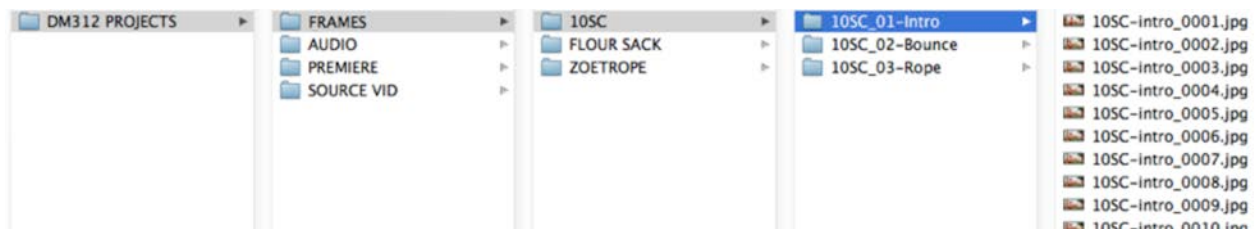
1. Create a Project Directory

Before starting a Premier project you should create a directory structure to store your various asset files in. The following is an example of how to structure your project for easy portability and back-up. In this case I have included the following folders:

- FRAMES - my original Stop-Mo frames
- PREMIERE-Where you set the original Premiere project to.
- AUDIO-Any sound for files for your project.
- SOURCE VID-original QT Movies

Other folders can be created as the need arises

- TITLES
- STILLS
- ETC. . .

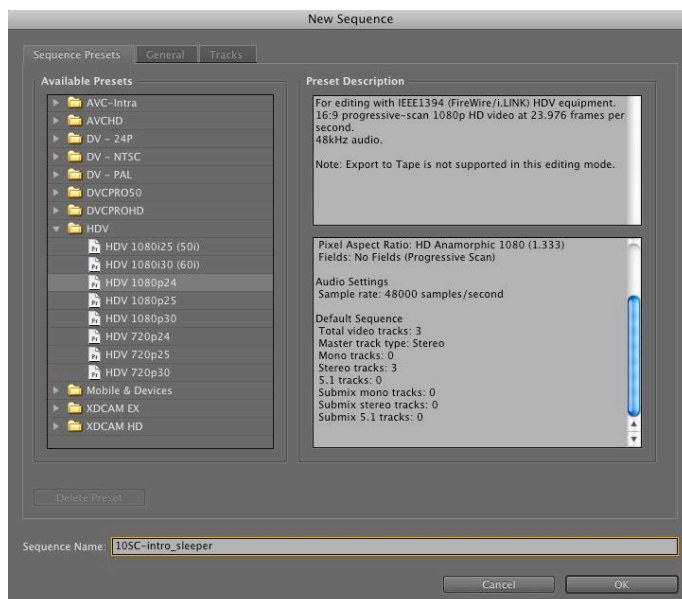


2. Open Premiere and Set Project

Open a new project in Premier and browse to the PREMIERE folder. Name the Premiere project the same as the stop-motion project you are placing it in.

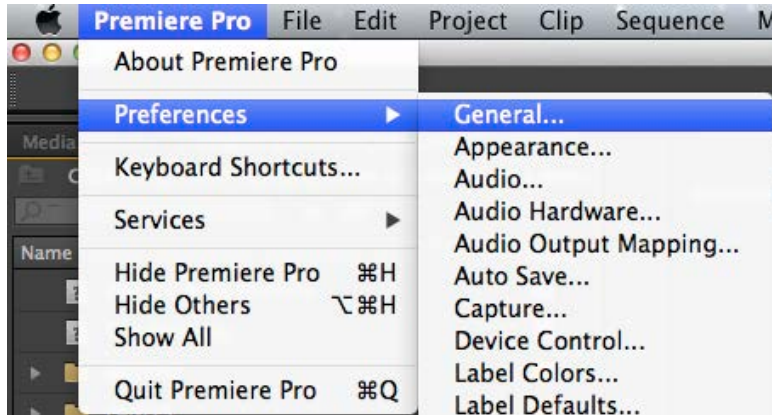
3. Create New Sequence

In the New Sequence window choose HDV>HDV 1080p24 (1440x1080) in the Sequence Preset tab. Name the sequence the exact name you would like your final movie to be named. In this case: *10SC-intro_sleeper*

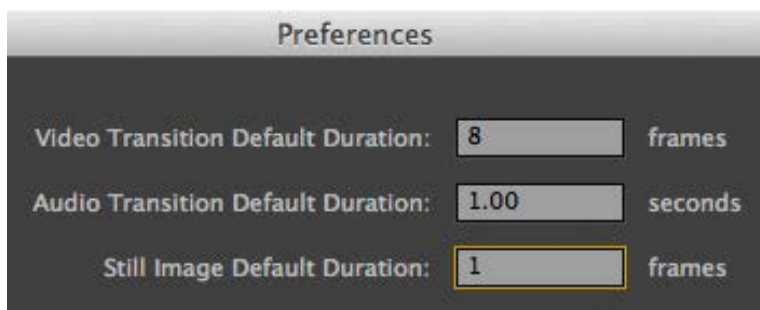


4. Import Frame Sequence or Movie files

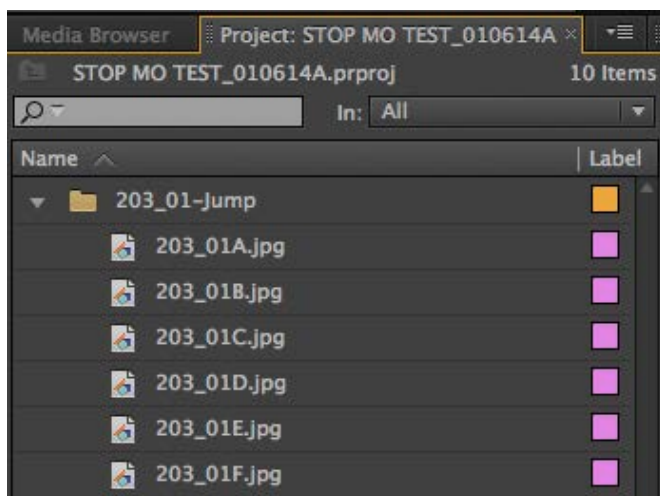
Option A:Importing Frame Sequences: If you choose to work directly from your original animation frames you must change the “Still Image Default Duration” setting Premiere preferences BEFORE importing. Go to Preferences/General. . . in Premiere.



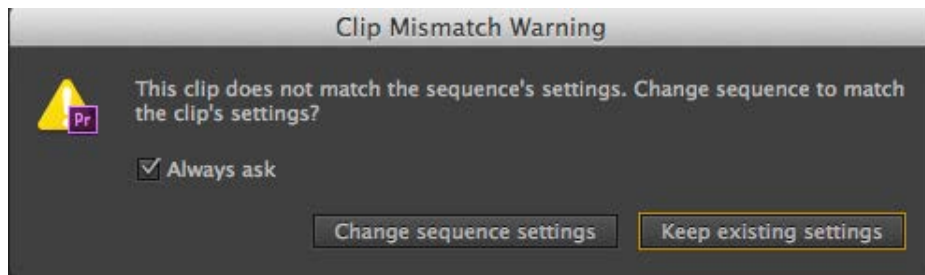
Change the “Still Image Default Duration” setting to 1 (or 2 if you shot your original animation in 2’s).



From there you can drag the entire Frame Sequence folder into the Projects Panel in Premiere.

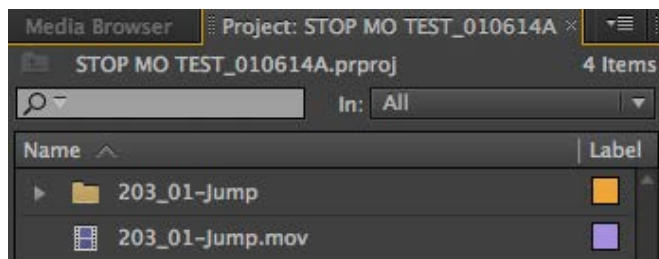


From the Project panel you can drag frames folder into the sequence timeline. A *Clips Mismatch Warning* will open.

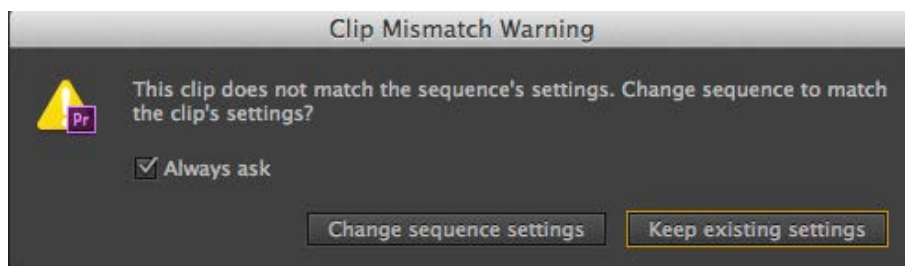


“Keep existing settings” will conform your imported frames to settings you chose when setting up your sequence. This is usually best when working with frame sequences.

Option B:Importing Movie Files: Import movie files from the SOURCE VID folder. You can do this by dragging the file directly into the asset bin (upper left panel) or browsing from the File/Import menu.



From the Project panel you can drag movie files into the timeline. A *Clips Mismatch Warning* will open.



“Change sequence settings” will conform your sequence setting to the imported movie. This is best when working with original movie content because it reduces quality loss and allows for smoother rendering and workflow.